

DRAGONWAR®



[HTTP://WWW.DRAGONWAR.JP](http://www.dragonwar.jp)



USER'S MANUAL

**Zodiac 12**  
G13 PRO-GAMING MOUSE



## CONTENTS

PACKAGE CONTENTS / SYSTEM REQUIREMENTS	02
GAMING MOUSE LAYOUT	03
INSTALLING YOUR DRAGONWAR G13 MOUSE	04
CONFIGURING YOUR DRAGONWAR G13 MOUSE	05
ALTERNATE MOUSE BUTTON	06
BUTTON ASSIGNMENT MENU	07
SENSITIVITY OPTIONS	08



## PACKAGE CONTENTS / SYSTEM REQUIREMENTS

### PACKAGE CONTENTS

- Dragonwar Thor Gaming Mouse
- User Manual
- Set Up CD Rom

### SYSTEM REQUIREMENTS

- PC with a free USB 2.0 port
- Windows 10 / Windows 8 / Windows 7 / Windows Vista / Window XP

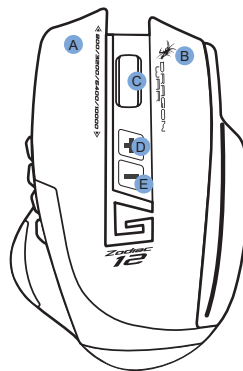
### TECHNICAL SUPPORT

- 1 years limited warranty
- Free online technical support at [www.dragonwar.jp](http://www.dragonwar.jp)

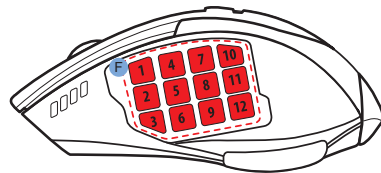
### TECHNICAL SPECIFICATIONS

- Customizable ergonomics to fit all hand sizes
- 10000dpi(Boost up by software) blue sensor system
- Gold plated connector
- Braided USB cable

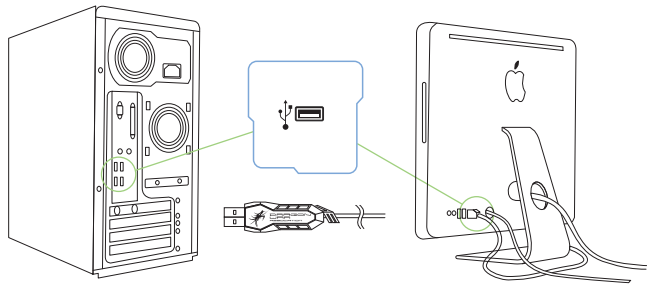
## GAMING MOUSE LAYOUT



- A. Left Mouse Button  
B. Right Mouse Button  
C. Scroll Wheel  
D. DPI Mode +  
E. DPI Mode -  
F(1-12). Assign Buttons



## INSTALLING YOUR DRAGONWAR G13



- Step 1: Plug the Dragonwar G13 into the USB port of your computer.  
 Step 2: Run the installer and follow the Programme.  
 Step 3: Wait until the software automatically downloads and installs.  
 Step 4: Open the programme, then set up

## CONFIGURING YOUR DRAGONWAR G13

### MOUSE TAB

The Mouse Tab is your default tab when you first install Programme. This tab allows you to customize your device's profiles, button assignments, performance and lighting.



## ALTERNATE MOUSE BUTTON

Initially, each of the mouse buttons is set to DEFAULT.  
Which you can choose from the Assign Button submenu



## BUTTON ASSIGNMENT MENU

Each of the mouse buttons is set to DEFAULT. However, you may change the function of these buttons by clicking the desired button to access the BUTTON ASSIGNMENT Menu.



### SENSITIVITY OPTIONS

Sensitivity pertains to how much effort is needed to move the mouse pointer in any direction. The higher the sensitivity, the more responsive the mouse will be.

1. Select the number of sensitivity stage needed.
2. Click on the stage you would like to preset and adjust using the arrow on the slider below.
3. Click "Apply" when done. To switch between different sensitivity stages, simply assign the Sensitivity Stage Up and Sensitivity Stage Down functions to the desired buttons.



### BREATHING LIGHT SETTING

Each of the mouse buttons is set to DEFAULT. However, you may change the function of these buttons by clicking the desired button to access the BUTTON ASSIGNMENT Menu.

