

S.W.A.P.
SPECIAL WEAPONS AMBIDEXTROUS POWER
PROFESSIONAL GAMING MOUSE

[HTTP://WWW.DRAGONWAR.JP](http://www.dragonwar.jp)



DRAGON
WAR

MOUSE

G18

USER MANUAL
PROFESSIONAL GAMING MOUSE



CONTENTS

| | |
|--|----|
| PACKAGE CONTENTS / SYSTEM REQUIREMENTS | 02 |
| GAMING MOUSE LAYOUT | 03 |
| INSTALLING YOUR DRAGONWAR G18 MOUSE | 04 |
| CONFIGURING YOUR DRAGONWAR G18 MOUSE | 05 |
| ALTERNATE MOUSE BUTTON | 06 |
| BUTTON ASSIGNMENT MENU | 07 |
| SENSITIVITY OPTIONS | 08 |

PACKAGE CONTENTS / SYSTEM REQUIREMENTS

PACKAGE CONTENTS

- Dragonwar G18 Gaming Mouse
- User Manual

SYSTEM REQUIREMENTS

- PC with a free USB 2.0 port
- Windows 10 / Windows 8 / Windows 7 / Windows Vista / Windows XP

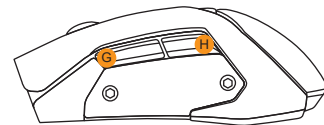
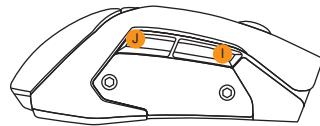
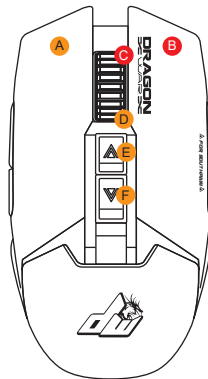
TECHNICAL SUPPORT

- 1 years limited warranty
- Free online technical support at www.dragonwar.jp
- Driver download from : www.dragonwar.jp

TECHNICAL SPECIFICATIONS

- Customizable ergonomics to fit all hand sizes
- Swap between LEFT / RIGHT hander
- 3400dpi Optical sensor system
- Gold plated connector
- Braided USB cable

GAMING MOUSE LAYOUT



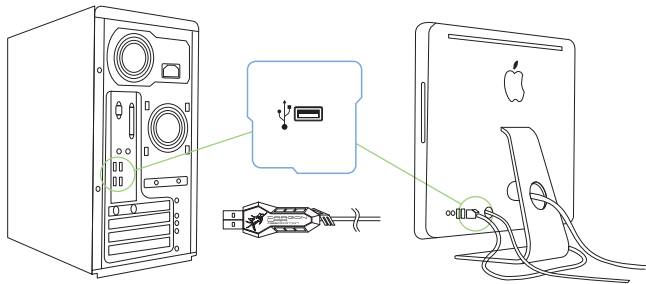
- A. Left Mouse Button
- B. Right Mouse Button
- C. Scroll Up
- D. Scroll Down
- E. Sensitivity Stage UP
- F. Sensitivity Stage Down
- G. Forward
- H. Backward
- I. Volume UP
- J. Volume Down



⚠ Swap between Left/Right Hander :

Hold the scroll **C** wheel & **B** right key for 3 seconds.
The function of the key will swap.
(Vice versa)

INSTALLING YOUR DRAGONWAR G18



- Step 1: Plug the Dragonwar G18 into the USB port of your computer.
- Step 2: Run the installer and follow the Programme.
- Step 3: Wait until the software automatically downloads and installs.
- Step 4: Open the programme, then set up

CONFIGURING YOUR DRAGONWAR G18

MOUSE TAB

The Mouse Tab is your default tab when you first install Programme. This tab allows you to customize your device's profiles, button assignments, performance and lighting.



ALTERNATE MOUSE BUTTON

Initially, each of the mouse buttons is set to DEFAULT.

Which you can choose from the Assign Button submenu

- 1 Play/Pause
- 2 Pre Track
- 3 Media Player
- 4 Stop
- 5 Volume -
- 6 Volume +
- 7 Next Track
- 8 Switch Key
- 9 DPI Repetition



BUTTON ASSIGNMENT MENU

Each of the mouse buttons is set to DEFAULT. However, you may change the function of these buttons by clicking the desired button to access the BUTTON ASSIGNMENT Menu.



SENSITIVITY OPTIONS

Sensitivity pertains to how much effort is needed to move the mouse pointer in any direction. The higher the sensitivity, the more responsive the mouse will be.

1. Select the number of sensitivity stage needed.
2. Click on the stage you would like to preset and adjust using the arrow on the slider below.
3. Click "Apply" when done. To switch between different sensitivity stages, simply assign the Sensitivity Stage Up and Sensitivity Stage Down functions to the desired buttons.



BREATHING LIGHT SETTING

Each of the mouse buttons is set to DEFAULT. However, you may change the function of these buttons by clicking the desired button to access the BUTTON ASSIGNMENT Menu.

