

MARKSMAN
PRO-GAMING MOUSE



DRIVER



MANUAL

[HTTP://WWW.DRAGONWAR.JP](http://www.dragonwar.jp)



DRAGON
WAR

MOUSE **G20**

USER MANUAL
PROFESSIONAL GAMING MOUSE



CONTENTS

PACKAGE CONTENTS / SYSTEM REQUIREMENTS	02
GAMING MOUSE LAYOUT	03
INSTALLING YOUR DRAGONWAR G20 MOUSE	04
CONFIGURING YOUR DRAGONWAR G20 MOUSE	05
ALTERNATE MOUSE BUTTON	06
ANTI RECOIL FUNCTION	07
SENSITIVITY OPTIONS	08

PACKAGE CONTENTS / SYSTEM REQUIREMENTS

PACKAGE CONTENTS

- Dragonwar G20 Gaming Mouse
- User Manual

SYSTEM REQUIREMENTS

- PC with a free USB 2.0 port
- Windows 10 / Windows 8 / Windows 7 / Windows Vista / Windows XP

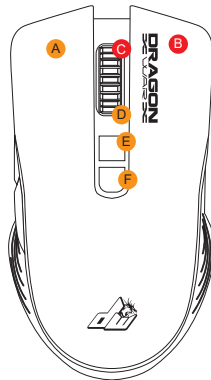
TECHNICAL SUPPORT

- 1 years limited warranty
- Free online technical support at www.dragonwar.jp
- Driver download from : www.dragonwar.jp

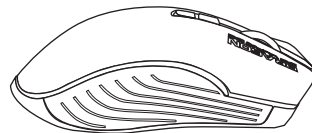
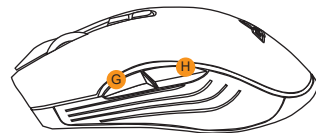
TECHNICAL SPECIFICATIONS

- Customizable ergonomics to fit all hand sizes
- 7000dpi Optical sensor system
- Gold plated connector
- Braided USB cable

GAMING MOUSE LAYOUT



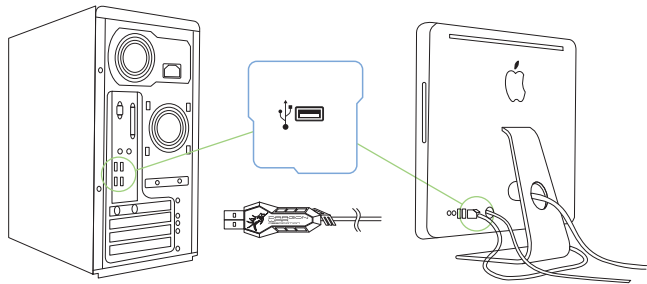
- A. Left Mouse Button
- B. Right Mouse Button
- C. Scroll Up
- D. Scroll Down
- E. Sensitivity Stage Up
- F. Sensitivity Stage Down
- G. Forward
- H. Backward



⚠ Macro Function(Anti Recoil) SWITCH ON/OFF

Hold the scroll **C** wheel & **B** right key for 5 seconds. (Vice versa)
Function is turn ON when the GREEN LIGHT is flashing
Function is turn OFF when the BLUE LIGHT is flashing

INSTALLING YOUR DRAGONWAR G20

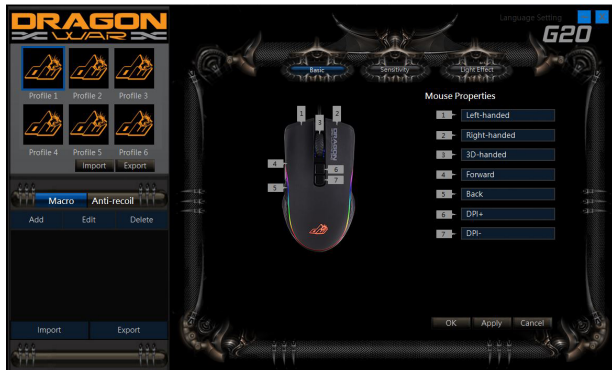


- Step 1: Plug the Dragonwar G20 into the USB port of your computer.
- Step 2: Run the installer and follow the Programme.
- Step 3: Wait until the software automatically downloads and installs.
- Step 4: Open the programme, then set up

CONFIGURING YOUR DRAGONWAR G20

MOUSE TAB

The Mouse Tab is your default tab when you first install Programme. This tab allows you to customize your device's profiles, button assignments, performance and lighting.

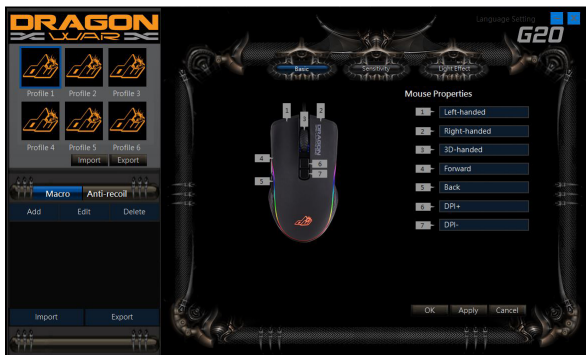


ALTERNATE MOUSE BUTTON

Initially, each of the mouse buttons is set to DEFAULT.

Which you can choose from the Assign Button submenu

- 1 Left Handed
- 2 Right Handed
- 3 3D Handed
- 4 Forward
- 5 Back
- 6 DPI +
- 7 DPI -



ANTI RECOIL FUNCTION

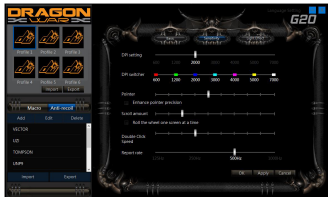
Each of the mouse buttons is set to DEFAULT. However, you may change the function of these buttons by clicking the desired button to access the BUTTON ASSIGNMENT Menu.



SENSITIVITY OPTIONS

Sensitivity pertains to how much effort is needed to move the mouse pointer in any direction. The higher the sensitivity, the more responsive the mouse will be.

1. Select the number of sensitivity stage needed.
2. Click on the stage you would like to preset and adjust using the arrow on the slider below.
3. Click "Apply" when done. To switch between different sensitivity stages, simply assign the Sensitivity Stage Up and Sensitivity Stage Down functions to the desired buttons.



BREATHING LIGHT SETTING

Each of the mouse buttons is set to DEFAULT. However, you may change the function of these buttons by clicking the desired button to access the BUTTON ASSIGNMENT Menu.

