



DRAGON
WAR

G27W

USER MANUAL
PROFESSIONAL GAMING MOUSE

CONTENTS

PACKAGE CONTENTS / SYSTEM REQUIREMENTS	02
GAMING MOUSE LAYOUT	03
INSTALLING YOUR DRAGONWAR G27W MOUSE	04
CONFIGURING YOUR DRAGONWAR G25 MOUSE	05
ALTERNATE MOUSE BUTTON	06
SENSITIVITY OPTIONS	07
MACRO DEFINITION SETTING FUNCTION	08
MOUSE GRIP TAPE	09

PACKAGE CONTENTS / SYSTEM REQUIREMENTS

PACKAGE CONTENTS

- Dragonwar G257W Wireless Gaming Mouse + Receivers
- Type-C Cable(for Charger)
- USB A to Type-C Adapter
- Grip Tape x 1 Set

SYSTEM REQUIRMENTS

- PC & Mac with a free USB 2.0 & Type-C port
 - Windows / MacOS X or Later
 - Smartphone / Tablets / Computer Notebook and other devices with Type-C Port
-

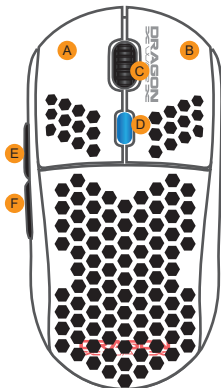
TECHNICAL SUPPORT

- 1 years limited warranty
 - Free online technical support at www.dragonwar.jp
 - Driver download from : www.dragonwar.jp
 - User Manual download from : www.dragonwar.jp
-

TECHNICAL SPECIFICATIONS

- Customizable ergonomics to fit all hand sizes
- 3600dpi Optical sensor system

GAMING MOUSE LAYOUT

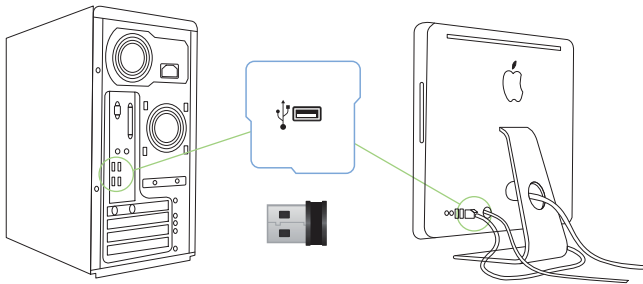


! SWITCH RGB Mode
ON/OFF

- A. Left Mouse Button
- B. Right Mouse Button
- C. Scroll Up / Down
- D. Sensitivity Stage Up / Down
- E. Forward
- F. Backward

- G. Mouse On / Off
- H. RGB Switch

INSTALLING YOUR DRAGONWAR G27W

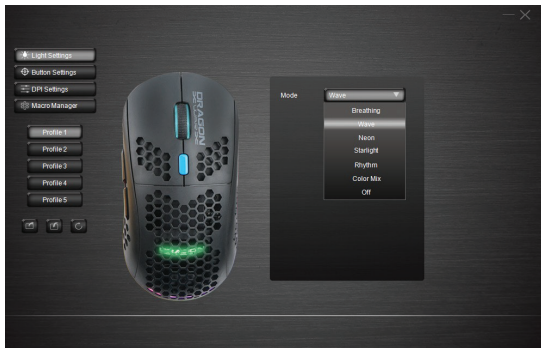


Step 1: Plug & Play Dragonwar G27W into the USB port of your computer.

CONFIGURING YOUR DRAGONWAR G27W

MOUSE TAB

The Mouse Tab is your default tab when you first install Programme. This tab allows you to customize your device's profiles, button assignments, performance and lighting.



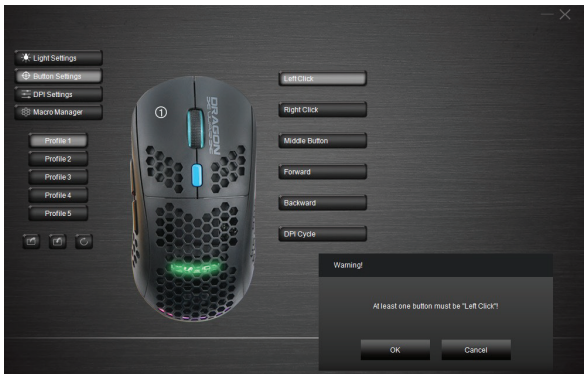
BREATHING LIGHT SETTING

Each of the mouse buttons is set to DEFAULT. However, you may change the function of these buttons by clicking the desired button to access the BUTTON ASSIGNMENT Menu.

ALTERNATE MOUSE BUTTON

Initially, each of the mouse buttons is set to DEFAULT.

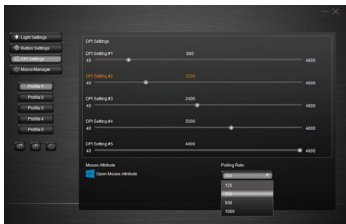
Which you can choose from the Assign Button submenu



SENSITIVITY OPTIONS

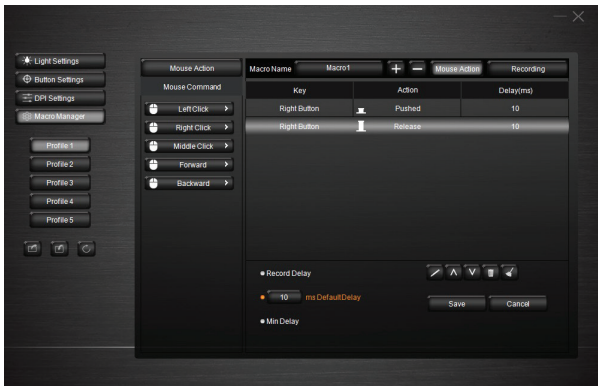
Sensitivity pertains to how much effort is needed to move the mouse pointer in any direction. The higher the sensitivity, the more responsive the mouse will be.

1. Select the number of sensitivity stages needed.
2. Click on the stage you would like to to preset and adjust using the arrow on the slider below.
3. Click "Apply" when done. To switch between different sensitivity stages, simply assign the Sensitivity Stage Up and Sensitivity Stage Down functions to the desired buttons.



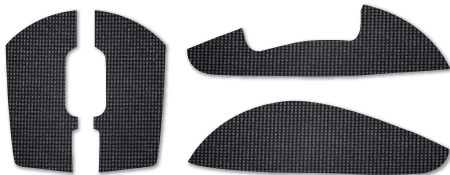
MACRO DEFINITION SETTING FUNCTION

You can set different key combinations through macro definition to match your work or gaming for better performance



G27W Mouse Grip Tape 1 Set

Free
Grip Tape
1 Set



G27W

2.4G Wireless Gaming Mouse
With Programmable



DRIVER



MANUAL

[HTTP://WWW.DRAGONWAR.JP](http://www.dragonwar.jp)